

hinge

ARCHITECTURE
INTERIOR DESIGN

THAI [DESIGN] COUP?

[Rainbow Ark School](#)

LITTLE BIG MAN?

[House Unimog](#)

SPARKLING ANIMALS?

[Crystalzoo](#)

ASD TRIUMPH?

[Police Married Quarters \[PMQ\]](#)

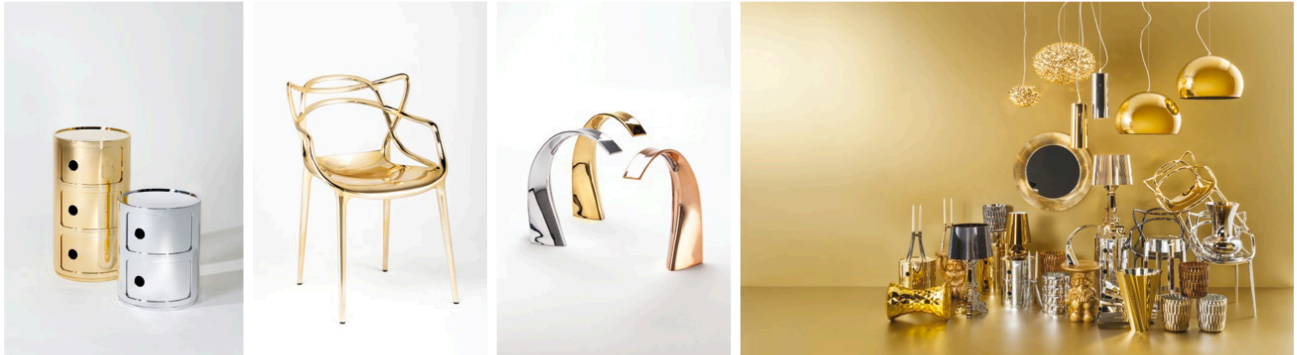
www.hinge.hk

ISSN 1561-781-5



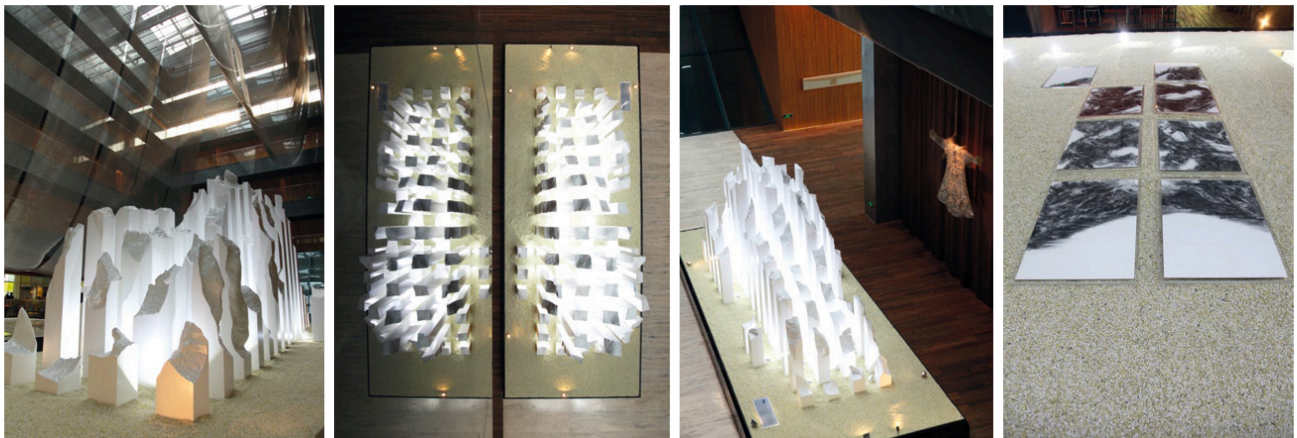
9 771561 781004

HK\$80
RMB80
US\$11



Mad for Metal

Italian contemporary plastic furniture brand Kartell is moving away from its signature style with a new collection of furniture, rendered in metal and aptly named Precious Kartell. "We want to focus attention on quality and preciousness, on the glamour and luxury of Kartell plastics, presented with brand new, exclusive and glossy faux metal finishes in gold, bronze, silver, gunmetal grey, and copper," says Kartell designer Ferruccio Laviani. The brand's bestsellers, including the Masters chair, the Shanghai vase and the Bloom lamp, have all been re-envisioned in shiny metallic finishes. To view the complete collection, visit www.kartell.it



Ode to Mountains

The Opposite House in Beijing is showcasing a series of charcoal drawings and large-scale sculptures by artist Charles Chau. The exhibition presents Chau's 'Breathing Mountain' installation, a large, distinctive sculpture made from wood panels, coated paint and LED lighting. It is flanked by three charcoal drawings, 'Beyond', 'Transcend', and 'Reflect', each of which highlights a different perspective of the installation's form and topography. "In this new set of works, I have aimed to convey the solidity and space of the mountain range, the massiveness of peaks that thrust up from the earth's crust, and the welcome emergence of creeks and streams," explains Chau. Titled 'Mountain Vastness', the exhibition is being held at the hotel's lobby until the end of this month. www.theoppositehouse.com www.charleschauprojects.com



Solid Stuff

Photography by Marie Clerin

The Webwood coffee table by French architect and designer Fabrice Ausset is the perfect accent piece for any style of decor. It has an irregularly shaped Oregon pine top and a polished marble monolith core. Says Ausset, "Offering an alliance between strength and lightness, Webwood is a metaphor for a net, or a web woven by a spider." Webwood is available in a limited edition through Philippe Hurel. www.philippe-hurel.com www.fabriceausset.net